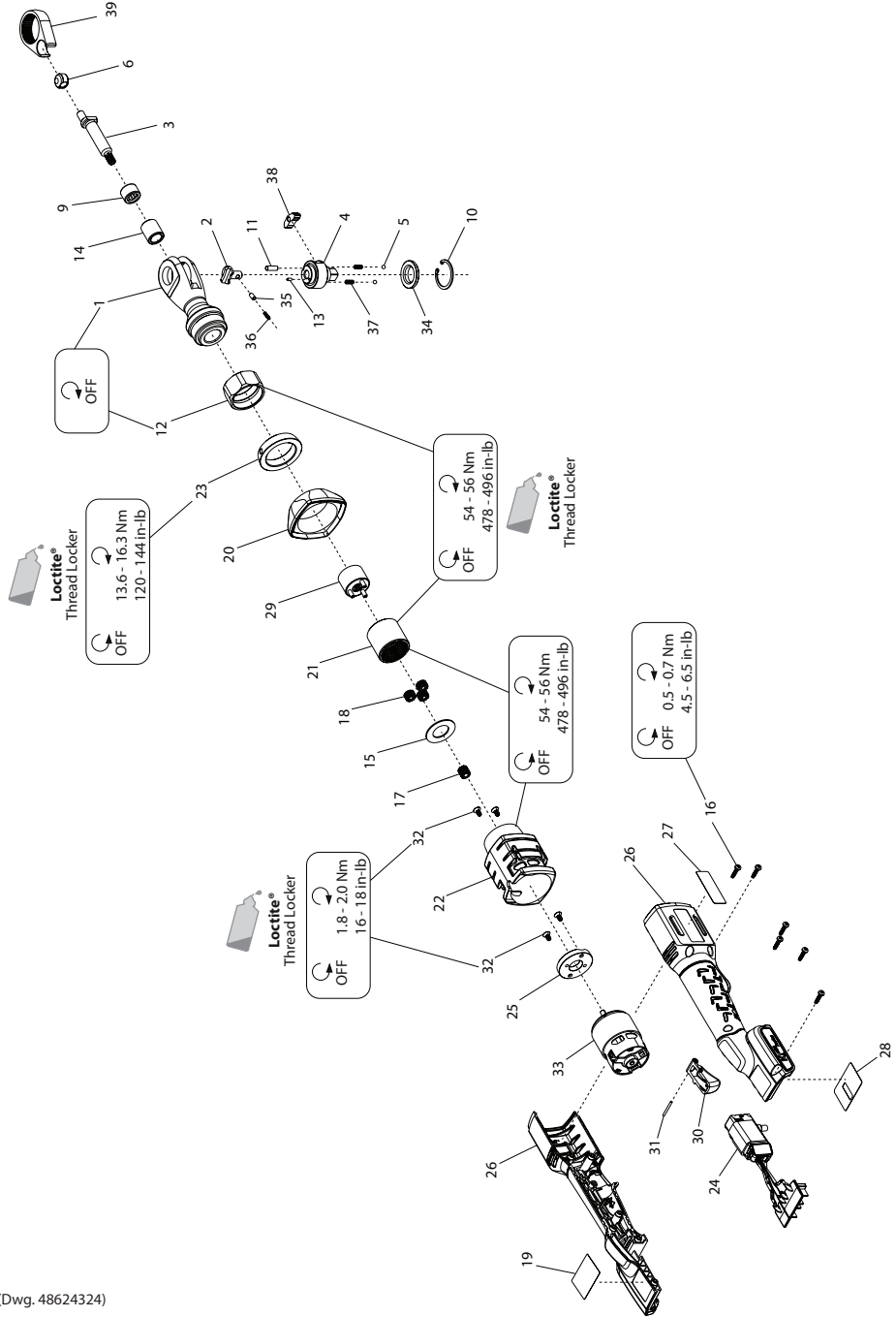


R3000 Series, Cordless Ratchet Wrench - Exploded View



(Dwg. 48624324)



www.ingersollrandproducts.com
 © 2013 Ingersoll-Rand, plc

48621296
 Edition 3
 February 2013

R3000 Series, Cordless Ratchet Wrench - Parts List

| Item | Part Description | Part Number | Item | Part Description | Part Number |
|------|---------------------------------|-------------|------|--|--------------|
| | Tool Housing Kit | R3100-K40 | | Ratchet Head Kit | |
| 16 | Screw, Housing (6 per kit) | --- | | For R3130 | 107XPA-TRK1 |
| 19 | Warning Label | --- | | For R3150 | 1077XPA-TRK1 |
| 26 | Tool Housing | --- | 2 | Reverse Button | 107XPA-38 |
| 27 | Information Label | --- | 4 | Anvil Assembly | |
| 28 | Serial Number Label | --- | | For R3130 | 107XPA-A44 |
| | Motor Housing Kit | R3100-40YK | | For R3150 | 1077XPA-A44 |
| 20 | Case, Aluminum | --- | 5 | Friction Ball (2 per kit) | --- |
| 22 | Housing, Motor | --- | 11 | Pawl Retaining Pin | --- |
| 23 | Coupling Nut | --- | 13 | Stop Pin | --- |
| 25 | Motor Adapter Plate | --- | 35 | Lock Pin | --- |
| 24 | Switch & Contact Block Assembly | R3100-K93 | 36 | Lock Spring | --- |
| | Trigger Assembly | R3100-K531 | 37 | Friction Spring (2 per kit) | --- |
| 30 | Trigger | --- | 38 | Pawl | --- |
| 31 | Pin, Trigger | --- | 34 | Thrust Washer | --- |
| | Electric Motor Kit | R3100-K54 | 10 | Retaining Ring | --- |
| 17 | Pinion, 13 Tooth | --- | | Fastener Kit (includes items 16 & 32) | R3100-K105 |
| 32 | Screw, Flat (4 per kit) | --- | | Label Kit (includes items 19, 27 & 28) | R3100-K99 |
| 33 | Motor | --- | | Pawl Kit (includes items 11, 35, 36 & 38) | 107XPA-K43 |
| 15 | Washer | R3100-K18 | | Spring Kit (includes items 5, 10, 34 & 37) | 107XPA-SK |
| | Gearing Kit | R3100-GK | * | Grease | |
| 18 | Gear, Planet | --- | * | IR #67 (1 lb can) - for Gearing | 67 1 LB |
| 21 | Internal Gear | --- | * | IR #67 (8 lb can) - for Gearing | 67 8 LB |
| 29 | Spindle Assembly | --- | * | IR #70 (1 lb can) - for Ratchet Head | 70 1 LB |
| 12 | Coupling Nut | 170-27 | * | IR #70 (8 lb can) - for Ratchet Head | 70 8 LB |
| | Ratchet Housing Assembly | 107XPA-A322 | * | Spline Wrench (for removal of item 21) | 170-SW |
| 1 | Ratchet Housing | --- | * | 20V Li-Ion Battery Pack (1.5 Ah) | BL2005 |
| 3 | Crank Shaft | 107XPA-35 | * | 20V Li-Ion Battery Pack (3 Ah) | BL2010 |
| 6 | Drive Bushing | 170-36 | * | Battery Charger | BC1120 |
| 9 | Crankshaft Needle Bearing | --- | * | Protective Boot, Ratchet Head | 107-BOOT |
| 14 | Crankshaft Bushing | --- | * | Carrying Case | R3000-CASE |
| 39 | Yoke | 109XPA-37 | | | |

* Not illustrated

Parts and Maintenance

When the life of the tool has expired, it is recommended that the tool be disassembled, degreased and parts be separated by material so that they can be recycled.

Tool repair and maintenance should only be carried out by an authorized Service Center.

Refer all communications to the nearest **Ingersoll Rand** Office or Distributor.

Related Documentation

For additional information refer to:

Cordless Ratchet Wrench Product Safety Information Manual 80232929.

Cordless Ratchet Wrench Product Information Manual 48621270.

Manuals can be downloaded from www.ingersollrandproducts.com.